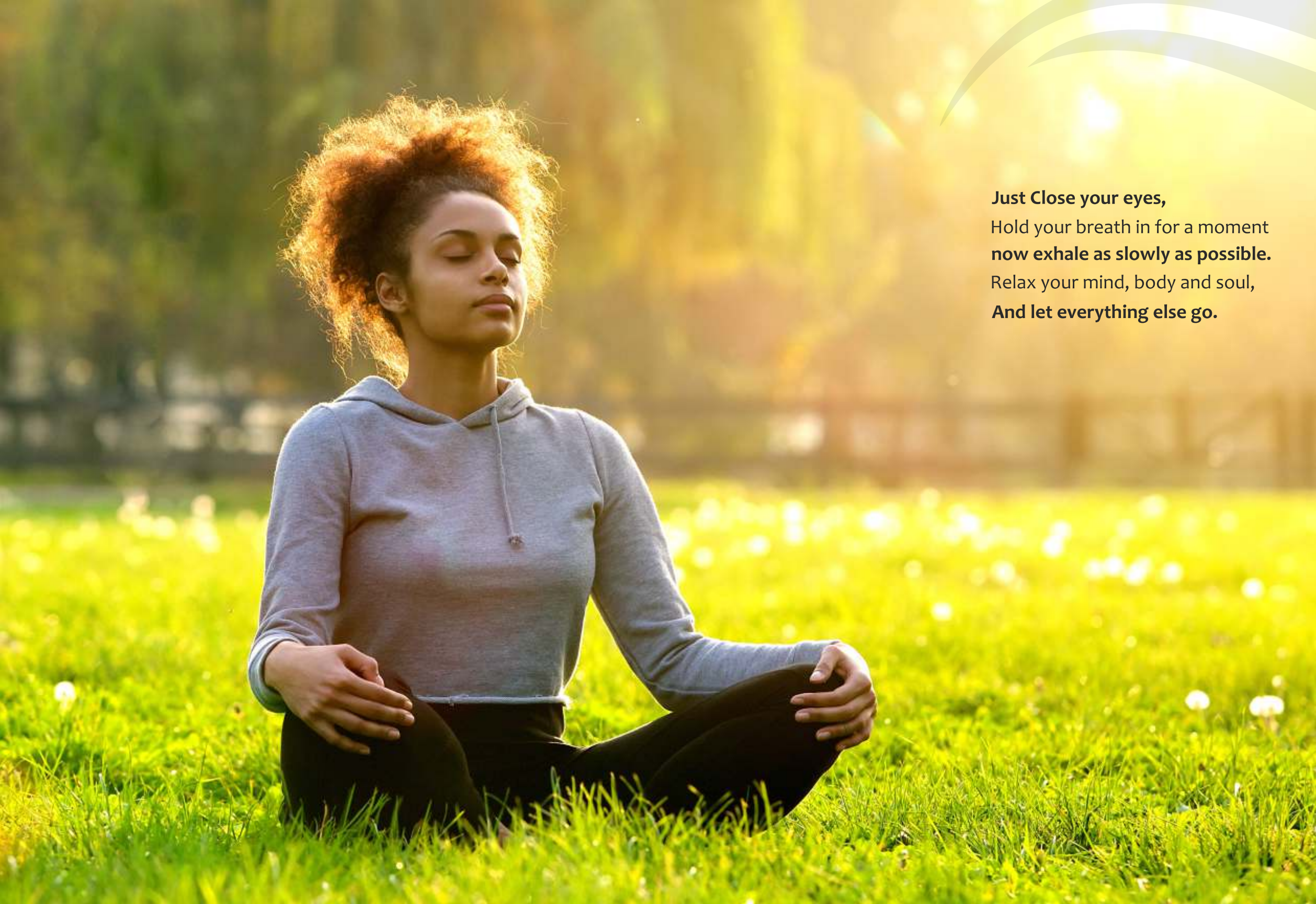




The ultimate in *luxury living*

A woman with curly hair is sitting in a meditative pose on a grassy field. She is wearing a grey hoodie and black pants. The background is a soft-focus landscape with trees and a bright sunset or sunrise, creating a warm, golden glow. The image is part of a promotional material for Arham Vatika, with text and a logo on the right side.

Just Close your eyes,
Hold your breath in for a moment
now exhale as slowly as possible.
Relax your mind, body and soul,
And let everything else go.

Welcome to blissful living

Welcome to Arham Vatika

At Arham Vatika we understand that residential properties in Ahmedabad are increasingly affected by the dynamism of the lifestyle that surrounds us. It is this understanding that inspires us to create spaces which nurture, shape and celebrate life. Be it ready to move-in spaces or under construction properties, you would find us there for you needs. With our rich legacy we craft spaces for tomorrow. When it is about looking for commercial or residential properties, you have a plethora of options from a real estate development company of our repute. With such a plethora of offering, you are sure to find the home, office or retail space you would love to move in to. At present we are offering **ARHAM VATIKA** near world famous archeological tourist site **LOTHAL**.





Create your present in the lap of your past

Ancient Lothal

The 4500-year-old city of Lothal was discovered in 1954. Dating back to the second millennium b.c., Lothal was an important port of the Indian subcontinent during the harappan era. Lothal is an important archeological site due to its scientific layout and a massive dockyard that facilitated trade with other civilization of the time.

The major attractions in Lothal are the vast ruins of the ancient city. The most important are the sites of the ancient dockyard, the acropolis, the lower town, the bead factory, the warehouses, and the drainage system.





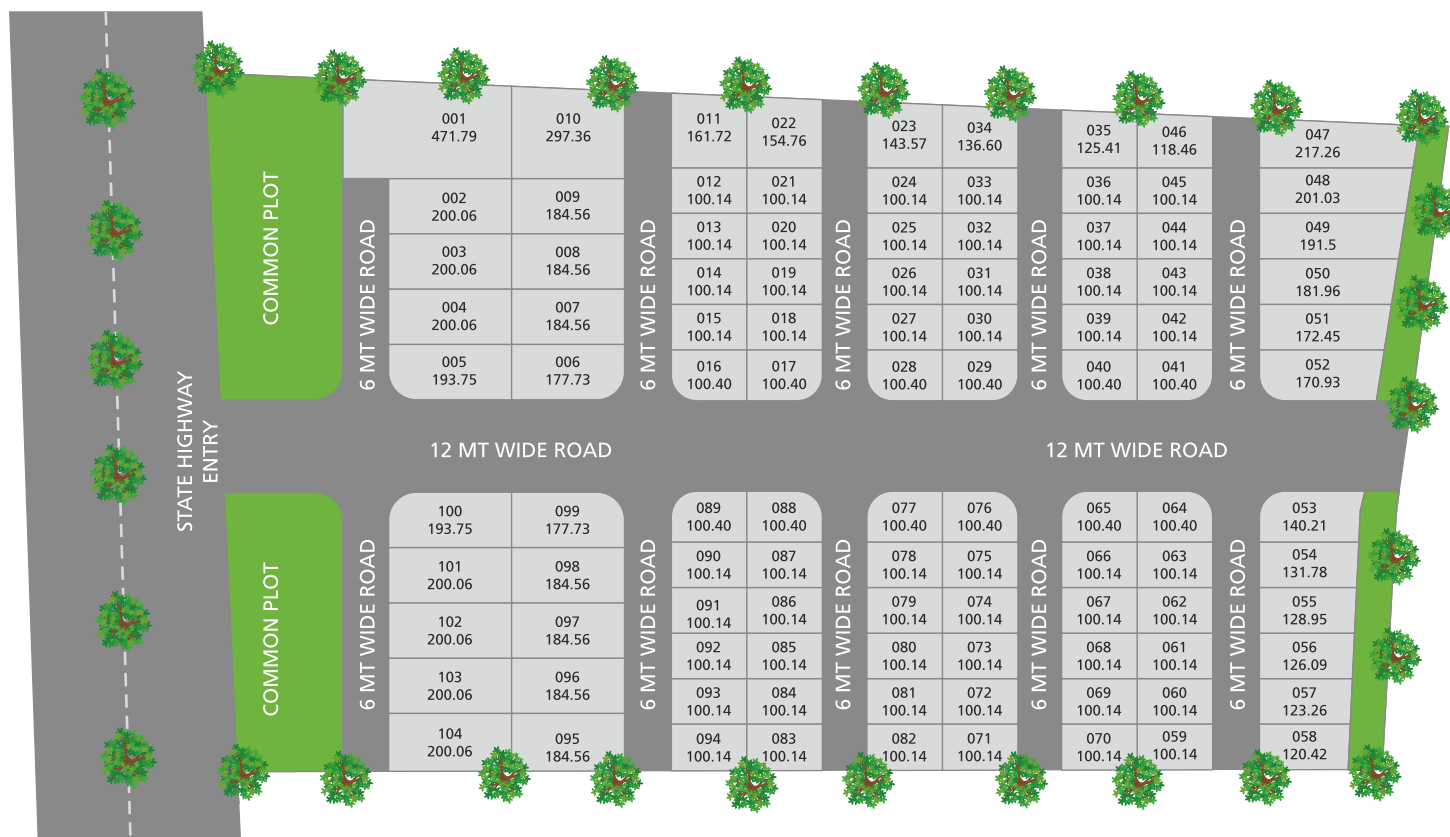
Dholera SIR Intelligent, Efficient, Connected and Robust Infrastructure

About Dholera SIR

DHOLERA SIR-India's First Smart City is growing and it is developing at an unprecedented rate. With an area spanning over 924 Sq Kms., this city is planned by UK based firm **HALCROW GROUP**. The Infrastructure consists of state of the art metro Train facility and Intelligent traffic Solutions by **CISCO** and **IBM**. The city is connected by an International Airport and a 10 Lane Expressway and also Metro Train to ensure smooth connectivity with the state, National and International cities. The Dholera SIR is planned with a vision to surpass the city of Shanghai, in terms of size, facilities, infrastructure and most importantly economic activities.



Layout (Saragwala)

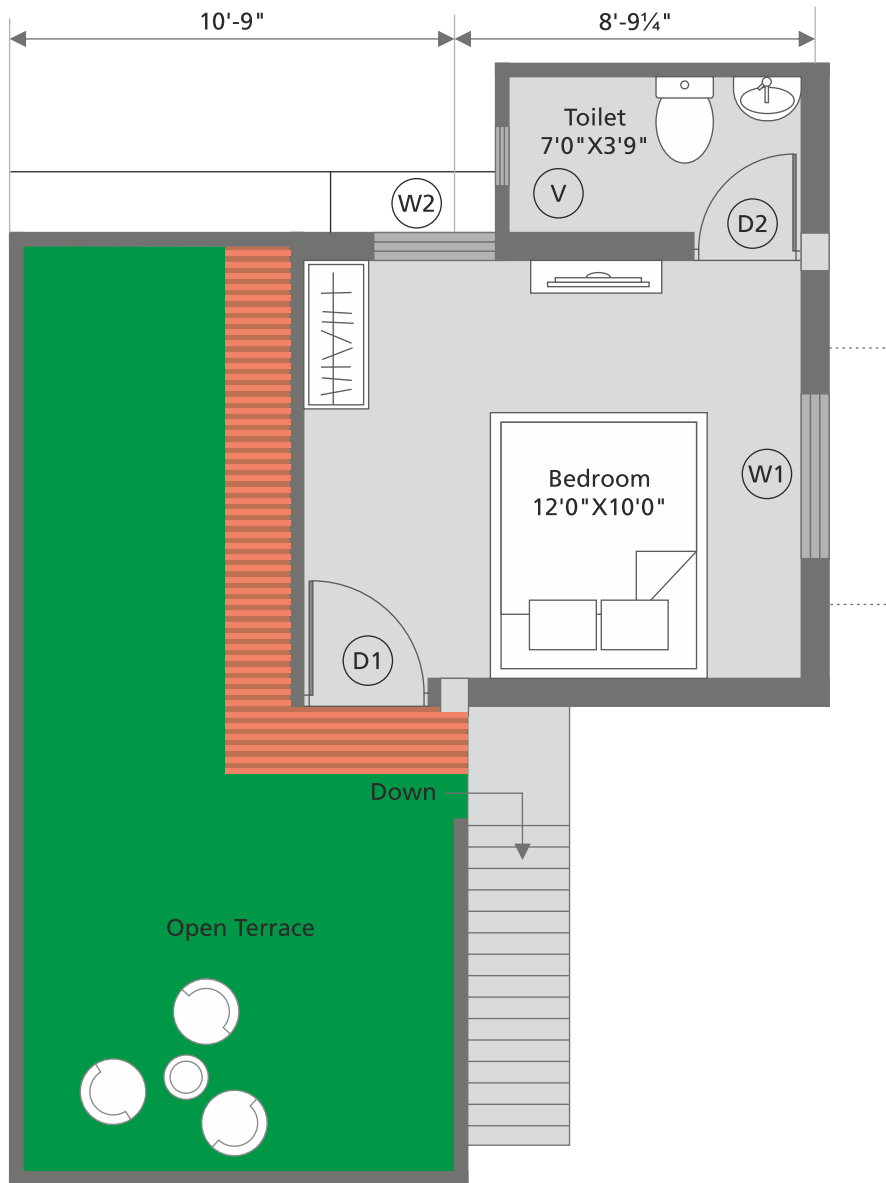


Layout (Fatehpura)



Ground Floor





First Floor



Luxurious Villa



The Ultimate Villa Living



Amenities

Gymnasium



Indoor Games



Cafeteria



Theater Room



Club House



Jogging Park



Kids Gaming Zone



Swimming Pool



Outdoor Games



Nearest Places

Navkar Tirth Dham
(Jain Temple)



Lothal
(Ancient
Indus Valley)



Maha Prabhuji ni Bethak
(Tagdi)



Butbhavani Temple
(Arnej)



Utteriya Heritage
Palace

Ganpati Temple (Koth)



Hanumanji
Temple
(Sarangpur)

N.A / N.O.C Title Clear ■





Fatehpura,
Near Pacham,
Ta-Dhandhuka



At Saragwala Village,
Near Lothal, Ta-Dholka,
Dist-Ahmedabad.

Office: 1210, phoenix,
opp. Aanal Flat, Vijay cross road,
navrangpura, ahmedabad - 380009

Tel.: 079 48483233
Mobile: +91 7878073233
Email: arhamvatika@gmail.com

www.arhamvatika.com